

MONTHLY MEMBERSHIP PROGRESS REPORT

LOCATION OREGON

District 36 G

Results as of: 4/30/2022

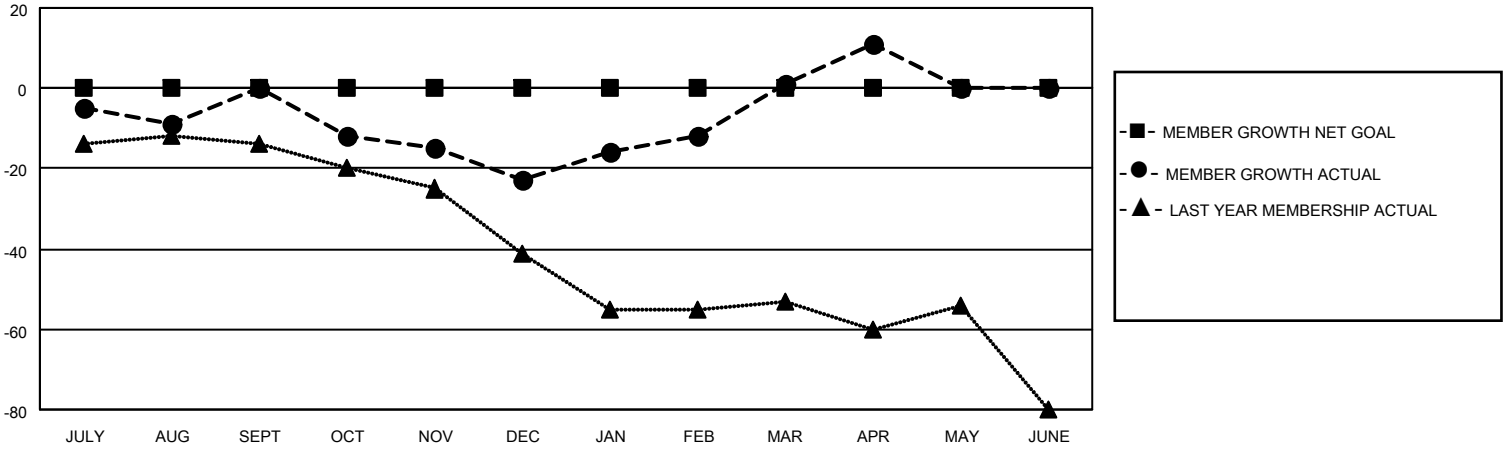
Clubs			
RESULTS FOR 2021-2022			
QUARTER	NEW CLUB GOAL	NEW CLUBS	DROPPED CLUBS
JULY/AUG/SEPT	0	0	0
OCT/NOV/DEC	0	0	0
JAN/FEB/MAR	0	0	0
APR/MAY/JUNE	0	0	0

Members			
RESULTS FOR 2021-2022			
QUARTER	MEMBER GROWTH NET GOAL	MEMBER GROWTH ACTUAL	DROPPED MEMBERS ACTUAL (including transfers)
JULY/AUG/SEPT	0	28	24
OCT/NOV/DEC	0	21	39
JAN/FEB/MAR	0	41	14
APR/MAY/JUNE	0	11	0

GOALS AND ACTUAL NEW CLUBS CUMULATIVE



GOALS AND ACTUAL MEMBERS CUMULATIVE



DROPPED CLUBS: 0	
DROPPED MEMBERS	
DECEASED	9
CLUB CANCELLED	0
OTHER	68
TOTAL	77

16 CLUBS OF 30 ADDED 1 OR MORE NEW MEMBERS

[CLICK HERE FOR CUMULATIVE MEMBERSHIP DATA](#)

<u>GENDER DISTRIBUTION</u>	
MALE	459 (59.69%)
FEMALE	309 (40.18%)
NON BINARY	1 (0.13%)
PREFER NOT TO ANSWER	0 (0.00%)
<hr/>	
TOTAL FAMILY UNIT MEMBERS	228
<hr/>	
FAMILY MEMBERS PAYING HALF DUES	115